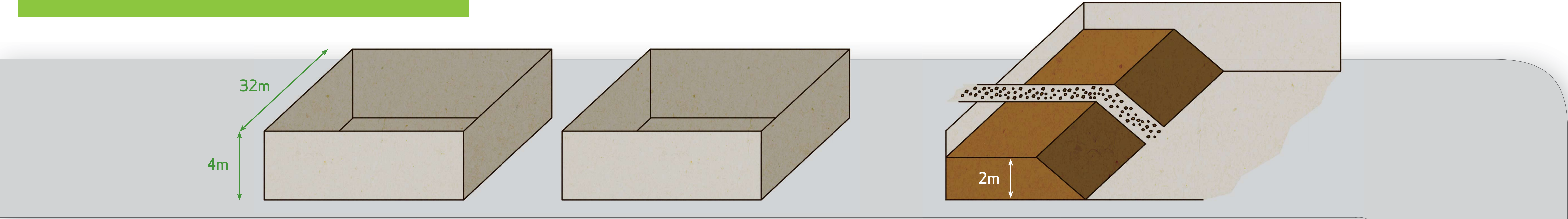


# COMPOSTING HALL PROCESS MAP

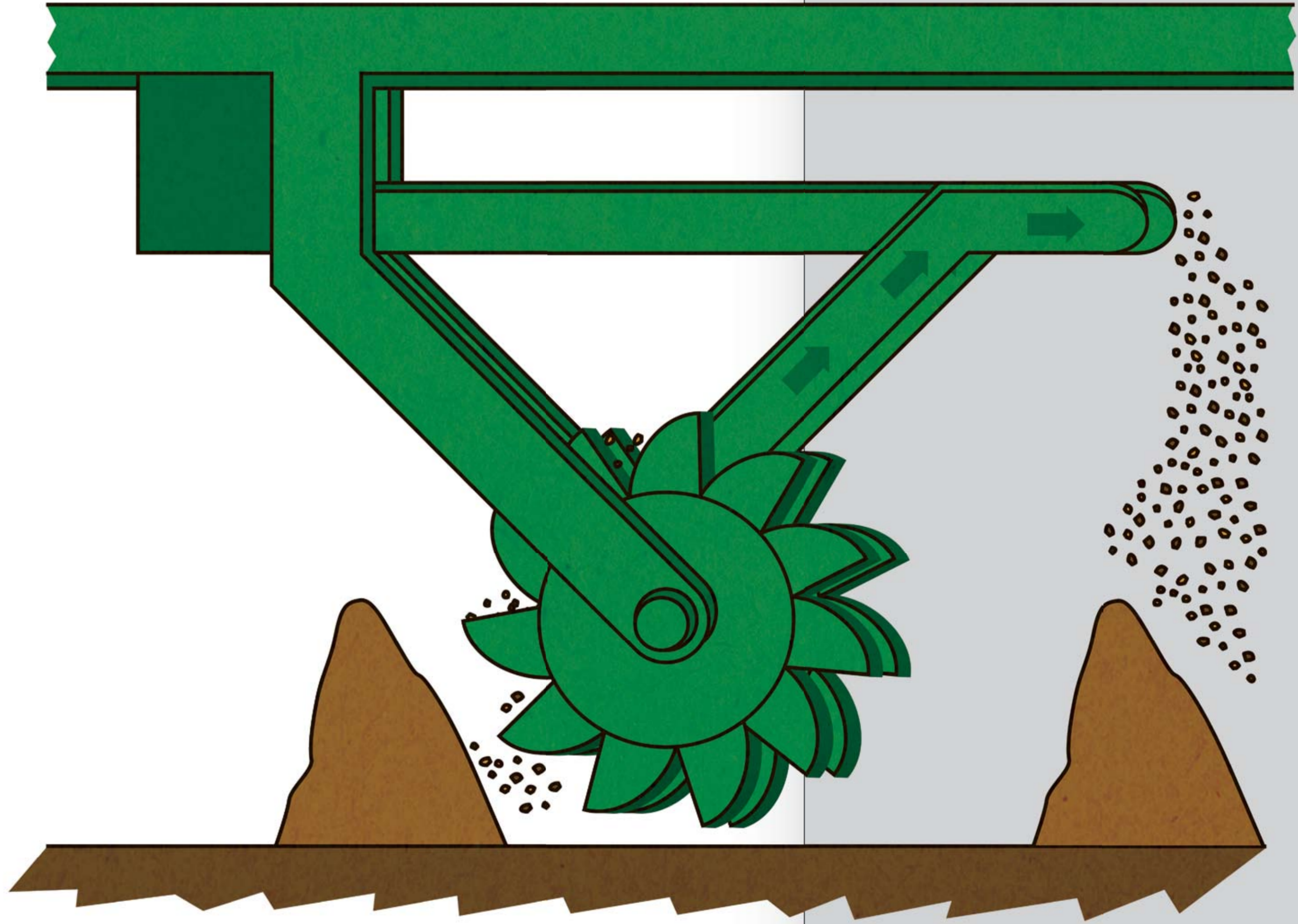
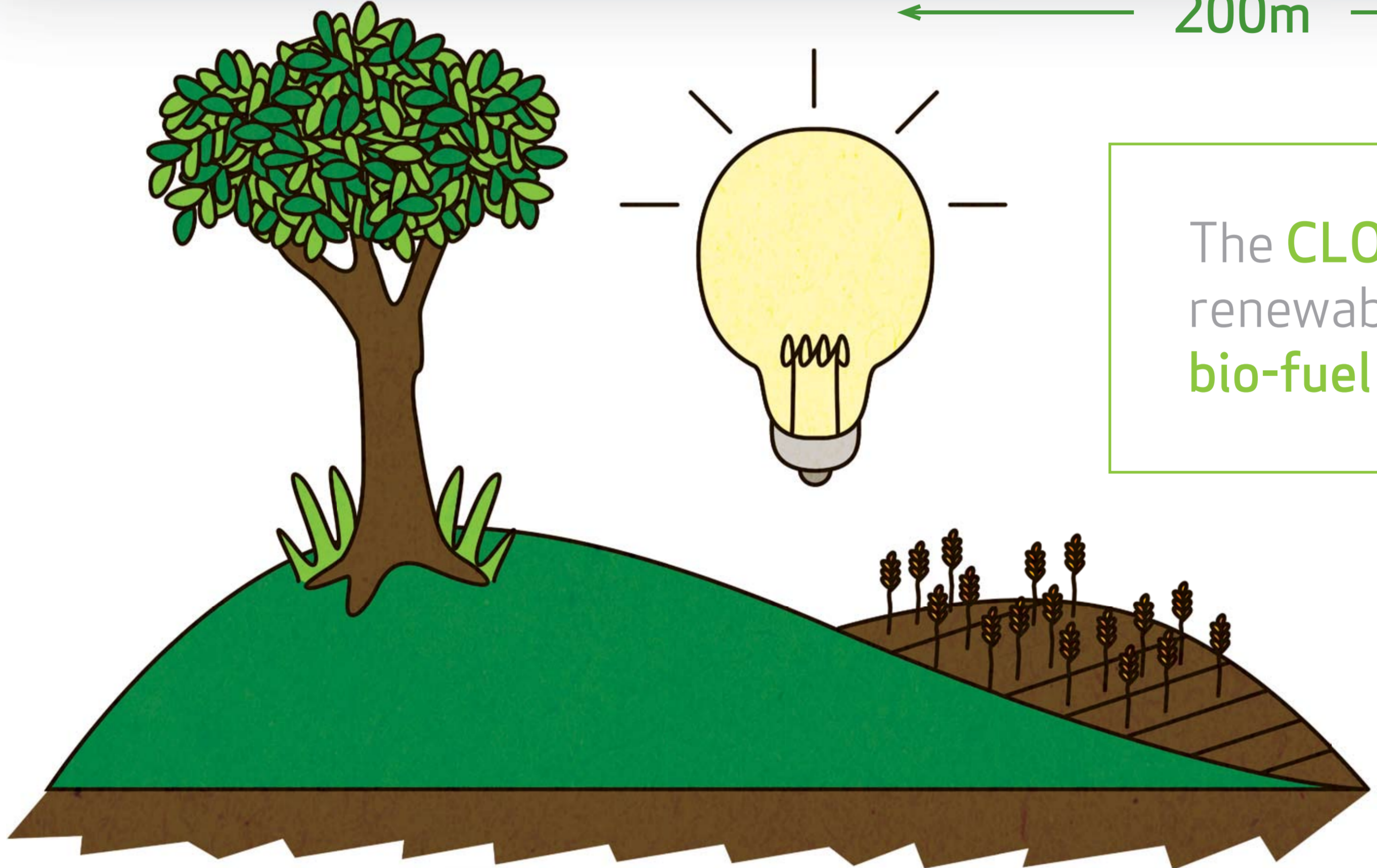
The 2 composting halls are the largest part of the MBT building. Each hall is 32m wide and 200m long.

Each hall is about the size of a football pitch.

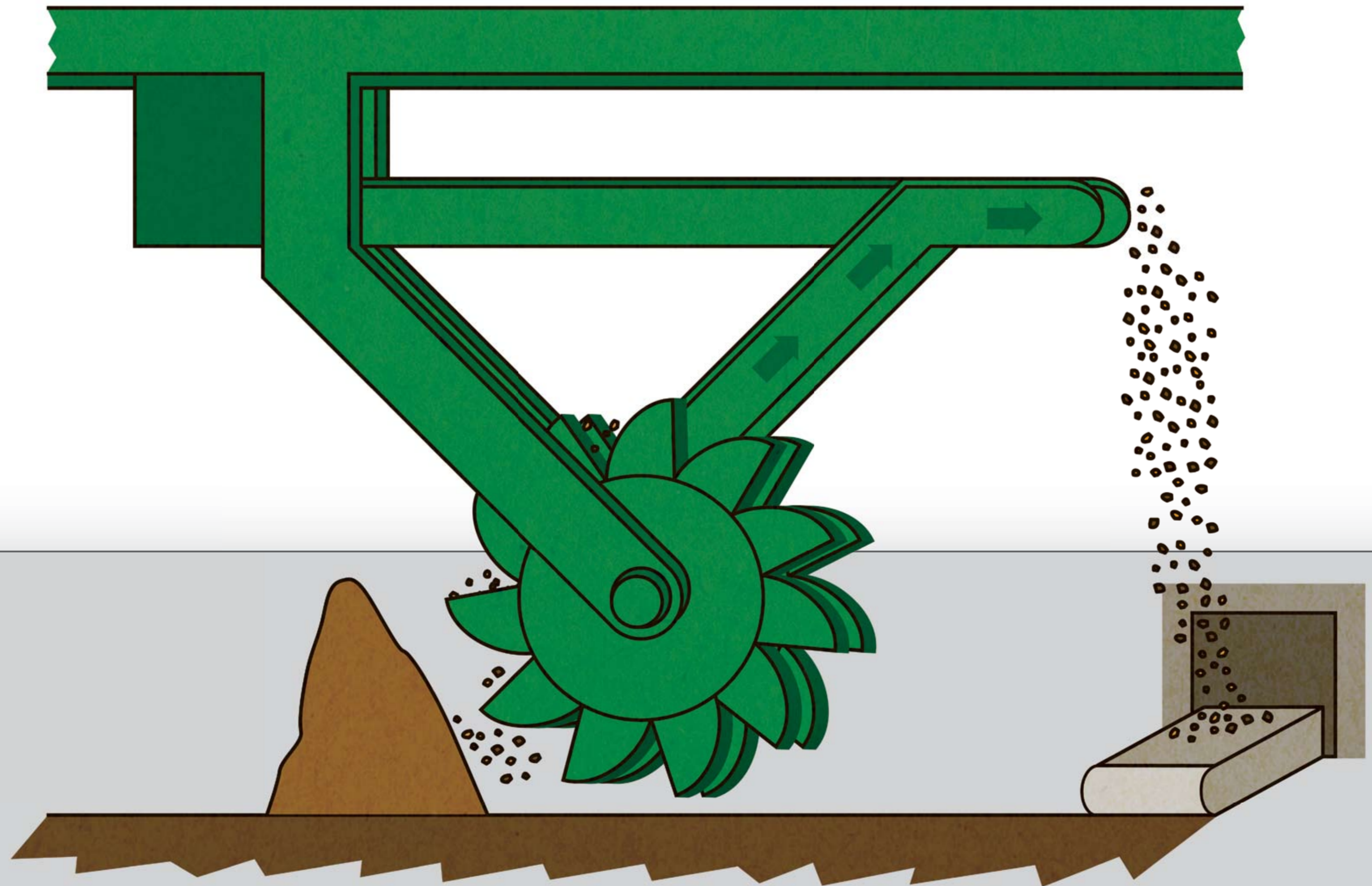
Conveyor belts lay the mainly organic waste in 2m deep piles across the halls.



The CLO could be used to restore old quarries, grow a renewable bio-fuel crop such as willow, or as a renewable bio-fuel to produce energy.



A giant pair of turning wheels with large buckets then slowly turns the material to keep it aerated and moves it down the hall. Large fans also keep fresh air moving through the waste material.



The Compost-Like Output (CLO) remains in the hall for 7 weeks then it is taken out of the hall to the output bay.